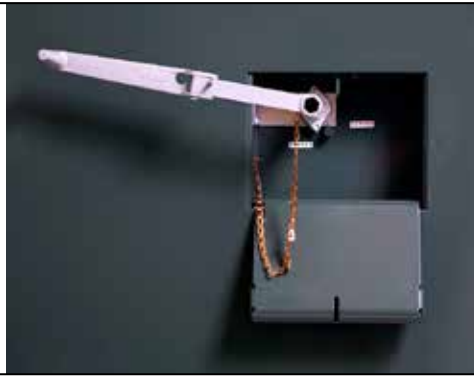


**Disconnect Operating Lever (if furnished)**

Access to the disconnect operating lever is on the enclosure side opposite the low voltage enclosure.

**To open the disconnect:**  
Open the lever compartment, and place the operating lever on the hex drive shaft. Rotate the lever clockwise to open the disconnect.

**To close the disconnect:**  
Open the lever compartment, and place the operating lever on the hex drive shaft. Rotate the lever counter-clockwise to close the disconnect.



**Status Indicator (white LED) Flashes for ½ second every 30 seconds:** Normal operation.

**Pulsates dim to bright:** Wi-Fi is connected.

**Flashes for ½ second every second:** An Error state has occurred, or a settings mismatch is active.

**Flashes 3 times (½ second on—½ second off) every 30 seconds:** The Loop Restoration function is timing or is in Ready mode, or the IntelliTeam® SG Automatic Restoration System is in Ready mode.

**On 10 seconds, then flashes for ½ second every 30 seconds:** Either Wi-Fi is disconnected; an Open/Close command came from the interrupter OPEN/CLOSE/READY lever, Wi-Fi, or SCADA; or a GROUND TRIP BLOCK lever moved.

**Solid On:** The Remote Operation function is disabled.

**Off:** The IntelliRupter® fault interrupter is not powered or is not functioning properly.

**Hot Line Tag Indicator (amber LED)**

**Flashes for ½ second every 2 seconds:** The hot line tag is applied.

**Off:** All hot line tags are removed.

- If the status indicator is off:**
- If line is energized, replace the protection and control module.
- If the status indicator does not indicate a Wi-Fi connection:**
- If line is energized, move computer at least 20 feet (6 m) closer.
  - Try another computer furnished with IntelliLink® Setup Software and appropriate security keys.
  - See Wi-Fi Power settings Notice on page 9 of Instruction Sheet 766-571.
  - Replace the communication module.



**⚠ WARNING**

IntelliRupter PulseCloser Fault Interrupters must be installed, operated, and maintained by qualified persons knowledgeable in overhead electric power distribution equipment and the associated hazards. This guide is not a replacement for adequate training and experience in safety procedures for this type of equipment. Read S&C Instruction Sheets 766-513, 766-530, and 766-540 thoroughly and carefully before installing and operating your IntelliRupter PulseCloser Fault Interrupter.

**Ground Trip Block Switch**

**To manually apply ground trip block:** Place the GROUND TRIP BLOCK switch in the **Enable** position. When the ground trip block is enabled, all selected elements will be disabled and reset. See S&C Instruction Sheet 766-530.

**To remove a manually applied ground trip block:** Place the GROUND TRIP BLOCK switch in the **Disable** position.

**Note:** Placing the GROUND TRIP BLOCK switch in the **Disable** position will not enable any elements that have not been enabled in the active protection profile. A ground trip block can only be removed by the method used to set it. This switch cannot remove a ground trip block set by SCADA or IntelliLink Setup Software.



**Hot Line Tag Switch**

**To manually apply a hot line tag:** Place the HOT LINE TAG switch in the **Enable** position.

**To clear a manually applied hot line tag:** Place the HOT LINE TAG switch in the **Disable** position.

**To clear an electronically applied hot line tag when a hot line tag has been applied manually:** Move the HOT LINE TAG switch to the **Disable** position, and then switch it to the **Enable** position and back to the **Disable** position once without delay.

**To clear an electronically applied hot line tag when a hot line tag has not been applied manually:** Switch the HOT LINE TAG switch to the **Enable** position and back to the **Disable** position twice without delay.

**Interrupter OPEN/CLOSE/READY Lever**

**To open interrupters:** Slide the INTERLOCK BAR to the right, and then pull the lever to the **Open** position. This does not require control power. The three interrupters are physically opened, and a mechanical block on each actuator prevents electrical closing.

**To lock interrupters open:** With the lever in the **Open** position, slide the INTERLOCK BAR to the right, so the blocking plate hole lines up with the lock hole.

**To close interrupters:** Remove the tag or padlock (if present), slide the INTERLOCK BAR left to the middle position, and push the lever to the **Ready** position. Slide the INTERLOCK BAR to the far-left position, and push the lever once toward the **Close** position to effect the first closing profile, or twice without delay to effect the second closing profile.

**Manual lever position:** When locked open by the manual lever, the IntelliRupter fault interrupter will not respond to an **Open** or **Close** command or perform any automatic operation. Place the lever in the **Ready** position before you leave the site, unless the unit is being purposely disabled.



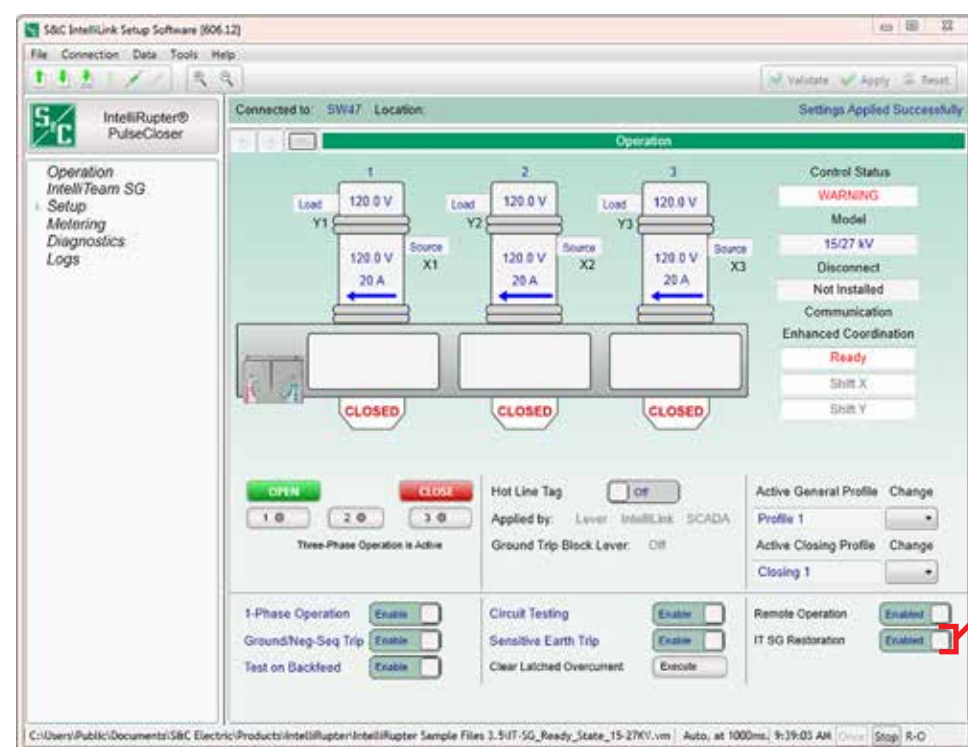


Figure 1. The Operation screen.

**NOTICE**

To disable automatic load restoration through the IntelliTeam® SG Automatic Restoration System (if furnished), select: IT SG Restoration—Disabled.

To disable the Loop Restoration feature (if furnished), select: Loop Restoration—Disabled (not shown).

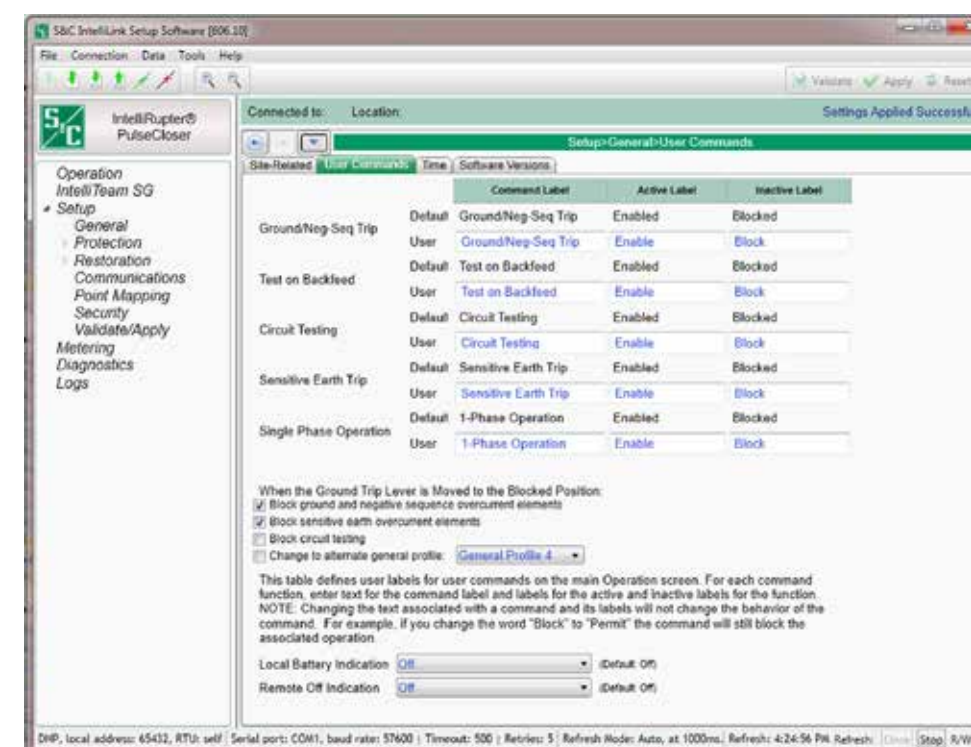


Figure 2. The User Commands screen.

### IntelliLink® Setup Software: Operation Screen

To match this screen with the Pad-Mount IntelliRupter fault interrupter, the low-voltage enclosure is on the left side of the installation.

- Poles are labeled left to right, configured here as 1, 2, and 3.
- X and Y terminal designations are configurable and affect directionality. The default configuration is: Upper terminal pads (Y1, Y2, and Y3) are labeled Y, and lower terminal pads (X1, X2, and X3) are labeled X.
- Voltage is shown for the three poles at each terminal pad. Phase-to-ground voltage (1-grd, 2-grd, and 3-grd), or phase-to-phase voltage (1-2, 2-3, and 3-1) can be selected.
- Interrupter OPEN/CLOSE indicators match the indicators on IntelliRupter fault interrupter, in this case they are closed.
- When an IntelliRupter fault interrupter has tripped open, the state of each pole is shown, for example: **TESTING-SEF**, **LOCKOUT-VOLTS** (lockout on voltage trip) or **LOCKOUT-FREQ** (lockout on frequency trip). For the **LOCKOUT-OC** state (lockout on overcurrent trip), a lightning bolt indicates the faulted phase(s) on the side the fault occurred. The current on each pole at the time of tripping is also shown.
- When an IntelliRupter fault interrupter is closed, load current and current direction are shown for each pole.
- The **Control Status** field shows the status of the protection and control module (in this case **WARNING**). It may also display: **OKAY**, **ALARM**, **ERROR**, **MAINT MODE**, or **SETTINGS MISMATCH**.

- The **Disconnect** field shows the position of the visual disconnect: **Open**, **Closed**, or **Not Installed** (shown).
- The **IT SG Restoration** or **Communication Enhanced Coordination** (shown) status is displayed when either feature is furnished and in **Enabled** mode.
- OPEN and CLOSE buttons trip and close the interrupters. A single phase can be operated if the **Single Phase Operation** feature is in **Active** mode (not shown).
- The **1-Phase Operation**, **Ground/Neg-Seq Trip**, and **Test on Backfeed** functions can be enabled or disabled.
- The **Hot Line Tag** mode can be enabled or disabled, and the application method is indicated.
- The **Circuit Testing** and **Sensitive Earth Trip** functions can be enabled or disabled.
- The **Clear Latched Overcurrent** function can be executed.
- The **Active General Profile** and **Active Closing Profile** settings can be selected.
- The **Remote Operation** function can be enabled or disabled.
- The **IT SG Restoration** function can be enabled or disabled.
- **Connected to:** and **Location:** fields:—At the top of the screen, show the name and address of the IntelliRupter fault interrupter connected through IntelliLink Setup Software.

### IntelliLink Setup Software: Setup>General>User Commands Screen

- Enter a **Command Label**, an **Active Label**, and an **Inactive Label** for every user command. These will be displayed on the *Operation* screen. **Note:** Text entered for active or inactive labels does not change their functionality.
- **Ground/Neg-Seq Trip** field—Check to enable the desired functionality.
- **Local Battery Indication** field—Select the **On** setting if a battery is installed. The STATUS indicator on the control module will flash ½-second every second when the battery is low, bad, or disconnected. If no battery is installed, select the **Off** setting.
- **Remote Off Indication** field—The STATUS indicator on the control module can be configured to display a solid **On** status when the **Remote Operation** feature is disabled.
- **Connected to:** and **Location:** fields—At the top of the screen, show the name and address of the IntelliRupter fault interrupter connected through IntelliLink Setup Software.

**NOTICE**

Refer to S&C Instruction Sheet 766-530 for detailed information about IntelliRupter fault interrupter configuration. Refer to S&C Instruction Sheet 766-513 for additional information on the operation of the Pad-Mounted IntelliRupter fault interrupter.

### If an IntelliRupter fault interrupter does not respond to SCADA commands:

- Enable remote operation. See the *IntelliLink Setup Software Operation* screen). Remove all hot line tags and set the interrupter OPEN/CLOSE/READY lever to the **Open** position.
- Apply the local hot line tag. If the IntelliRupter fault interrupter does not send a hot line tag status point to SCADA, replace the communication module.