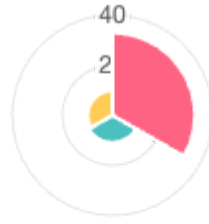


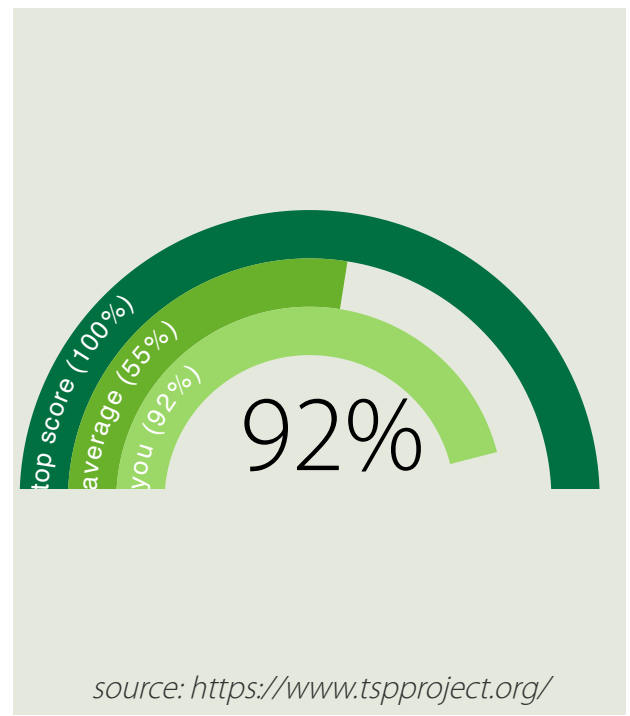


S&C Electric ESG/Environmental Practices

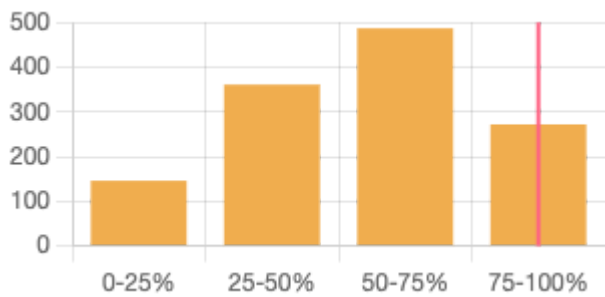
2024-09-10



Energy & GHG Emissions
Water Waste
Improvement planning



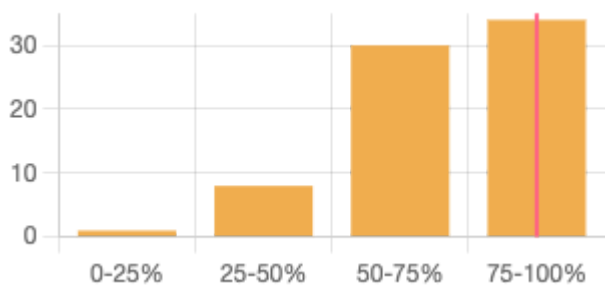
Environmental, Social and Governance (ESG) Core



92%

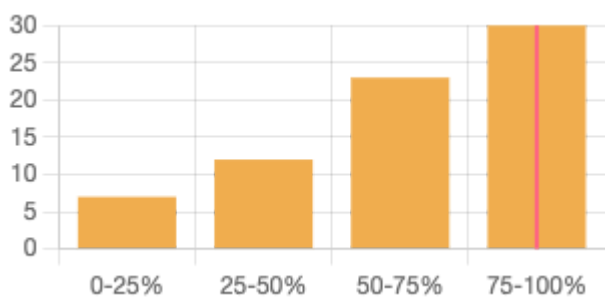
Benchmarking is based on 1266 responses to the section *Environmental, Social and Governance (ESG) Core*.

General manufacturing

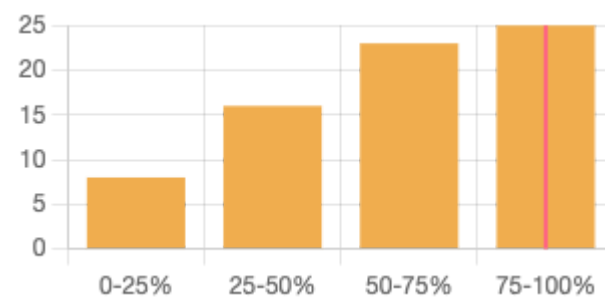


87%

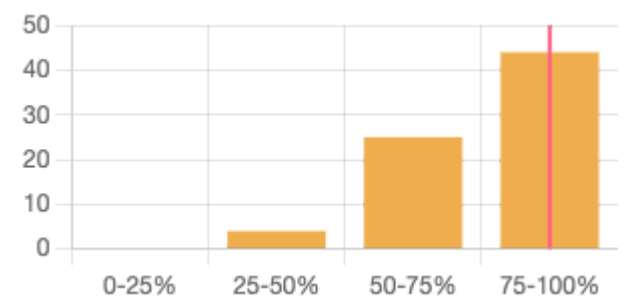
Product/process design (90%)



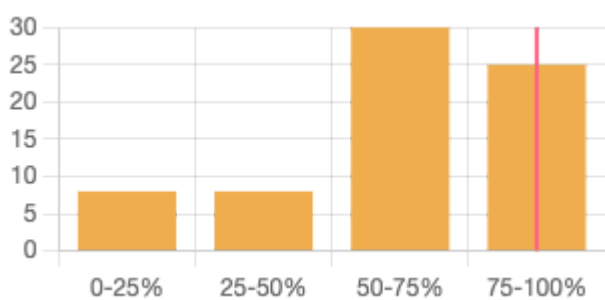
Sourcing (76%)



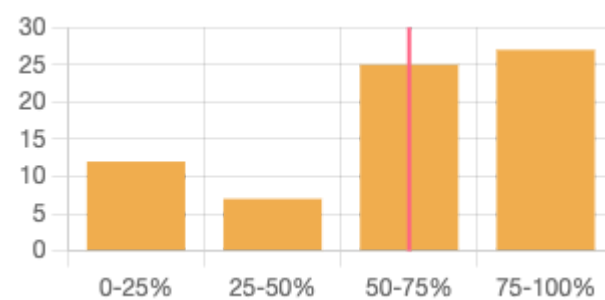
Production (95%)



Distribution & shipping (83%)



End-of-life (66%)



Benchmarking is based on 73 responses to the section *General manufacturing*.