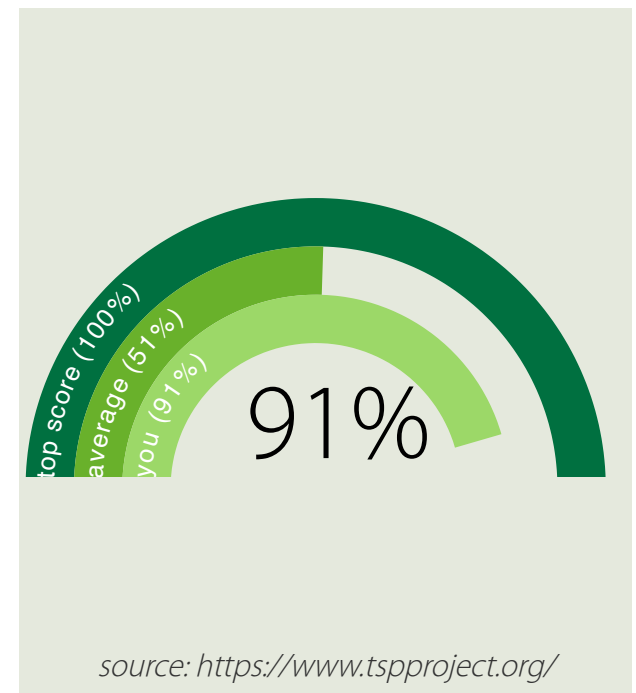


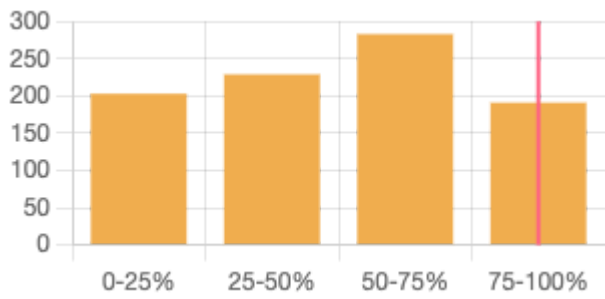


S&C Electric ESG/Environmental Practices

2023-11-21



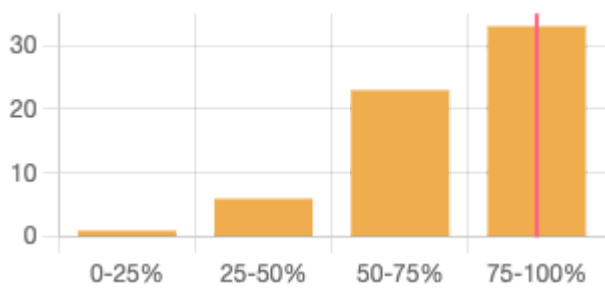
Environmental, Social and Governance (ESG) Core



91%

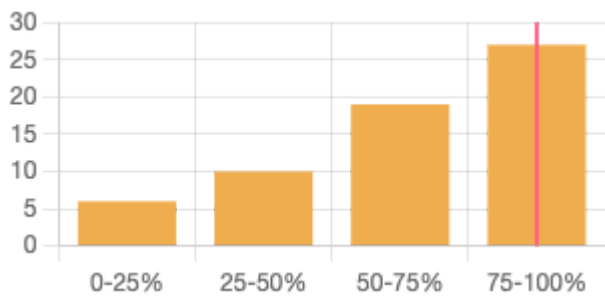
Benchmarking is based on 906 responses to the section *Environmental, Social and Governance (ESG) Core*.

General manufacturing

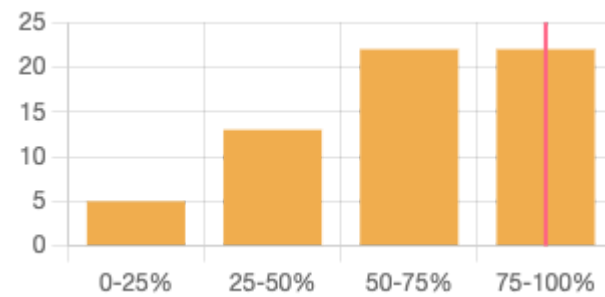


87%

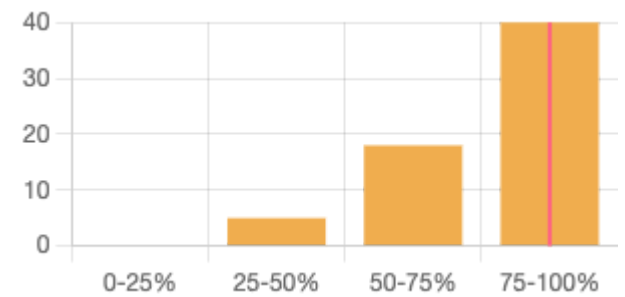
Product/process design (90%)



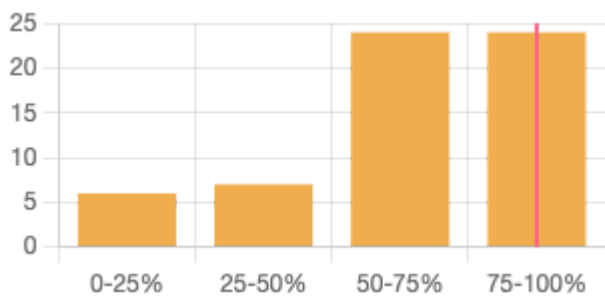
Sourcing (75%)



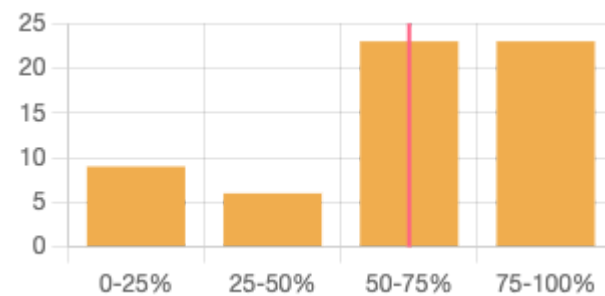
Production (95%)



Distribution & shipping (83%)



End-of-life (66%)



Benchmarking is based on 63 responses to the section *General manufacturing*.