

A simpler, more compact, and economical way to reliably switch and protect circuits at 46 kV



Typical lineup of 46-kV S&C Custom Metal-Enclosed Switchgear.

S&C Custom Metal-Enclosed Switchgear—now available in voltages through 46 kV—can satisfy the most complex switching and protection requirements of your power distribution system.

With its dependable, field-proven construction and finish, S&C Custom Metal-Enclosed Switchgear brings simplicity, reliability, flexibility, and economy to circuit switching and fault protection.



S&C Custom Metal-Enclosed Switchgear offers major benefits at 46 kV:

- **Eliminates Need for an Open-Air Substation.** Unlike open-air substations—which require significant civil and structural work—S&C Custom Metal-Enclosed Switchgear only needs a level concrete pad to install. *Your cost savings are very significant.* And installation of S&C Custom Metal-Enclosed Switchgear can be completed in *days*, not *weeks*.
- **Industry's Highest Security.** With S&C Custom Metal-Enclosed Switchgear, there's no need to enclose equipment inside a safety fence and no ground grid is required. Comprehensive access controls and security measures guard against unauthorized entry. A key interlock prevents each fuse compartment door from being opened while the interrupting device is in the closed position.
- **High Reliability, Low Maintenance.** S&C Custom Metal-Enclosed Switchgear components have been exhaustively tested and field-proven to provide unequalled performance and operational dependability. The switchgear is virtually *maintenance-free*. The only necessary maintenance is an occasional exercising of the interrupter switches and a simple cleaning of the insulators.

Compare these switching and protection alternatives at 46 kV ...

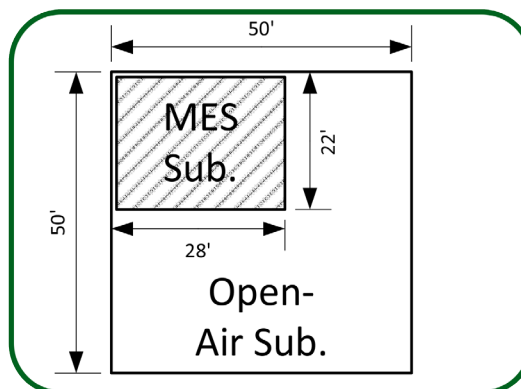


Open-air substation. Footprint: 50' × 50' (15 m × 15 m). Requires safety fence and ground grid.

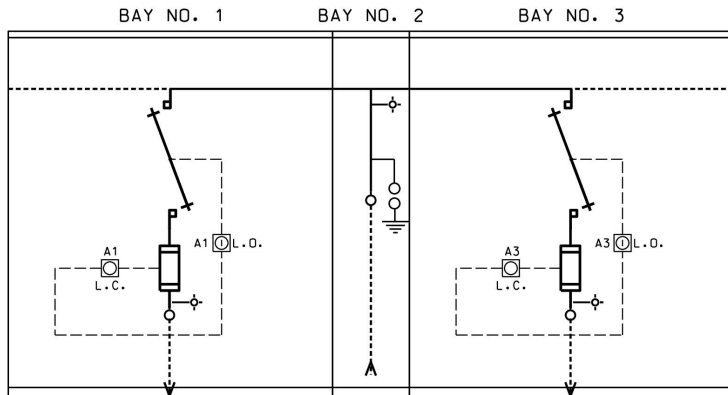


...Or

Three-bay S&C Custom Metal-Enclosed Switchgear lineup.
Footprint: 28' × 22' (8.6 m × 6.7 m). No safety fence or ground grid needed.

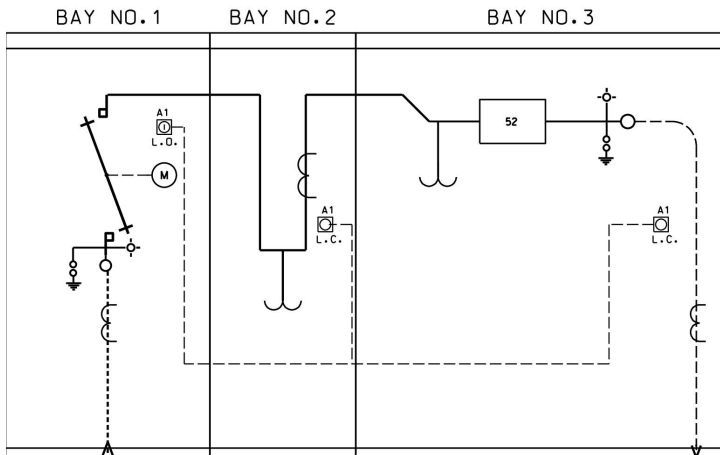


S&C has been designing and manufacturing metal-enclosed switchgear for nearly 70 years. You can be confident that we'll provide the right solution for your needs.



Single-line diagram of typical manual switch and fuse lineup.

Three-pole live circuit switching is provided by S&C Double-Break Style Alduti-Rupter® Switches. Fault protection is typically provided by single-pole-tripping S&C SMD-2C Power Fuses. Three-pole-tripping fault protection, if desired, can be provided by S&C Trans-Rupter® II Transformer Protectors or S&C Series 2000 Circuit-Switchers.



Single-line diagram of typical service entrance lineup.

Three-pole live circuit switching is provided by S&C Double-Break Style Alduti-Rupter® Switches. Virtually any user-specified current transformers, voltage transformers, and metering devices can be accommodated.

Contact your local S&C Sales Office for more information. Or visit our website, www.sandc.com

