

## SpeedNet Repeater Battery and Battery Disconnect Cable Replacement

This instruction sheet applies to SpeedNet Repeater Radios shipped before 2011. In 2010, the disconnect circuitry was incorporated in the power supply board assembly, making the battery disconnect cable unnecessary. All SpeedNet Repeater Radios shipped in 2011 and later do not have the battery disconnect cable installed and do not require it. For complete installation instructions and safety information on the SpeedNet Radio, please refer to Instruction Sheet 1072-510.

If a SpeedNet Streetlight-Mounted Repeater Radio is stored without connection to ac power for longer than two months, the battery will discharge to the point where the repeater may not be able to recharge it. The new battery disconnect cable has a relay that opens the battery circuit when the battery charger is not receiving ac power.

SpeedNet Repeater Radios manufactured after February 2009 have a factory installed battery disconnect cable. Date of manufacture is shown on the serial number label on the outside of the enclosure. See Figure 5 on page 2. Follow these instructions to install a battery disconnect cable and new battery:

### STEP 1.

- (a) Use a  $\frac{7}{16}$ -inch hex-driver to remove the bolts that secure the top of the enclosure.
- (b) Pry open the cover with a medium blade flat-head screwdriver. Be careful not to damage the gasket.
- (c) Disconnect the battery cable connector from connector J2 on the battery charger board and remove the cable tie. See Figure 1.
- (d) Loosen the two battery bracket screws with a #2 Phillips screwdriver and remove the old battery. See Figure 2.
- (e) Touch the metal enclosure to bring your body potential to the charge of the repeater radio, and then be careful not to touch any of the pins or components on the circuit board.
- (f) Connect the new battery disconnect cable (Catalog Number 007-001534-01) to Connectors J2 and J3 on the battery charger board. See Figure 1.
- (g) Install the new battery and tighten the battery bracket screws. See Figure 2.

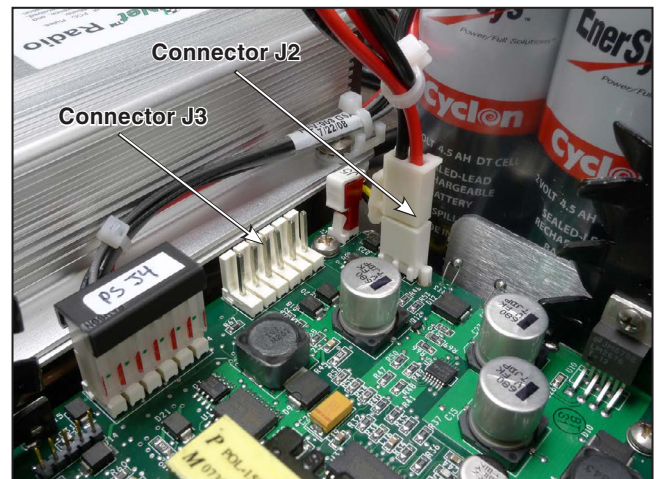


Figure 1. Connectors J2 and J3 on the battery charger board.

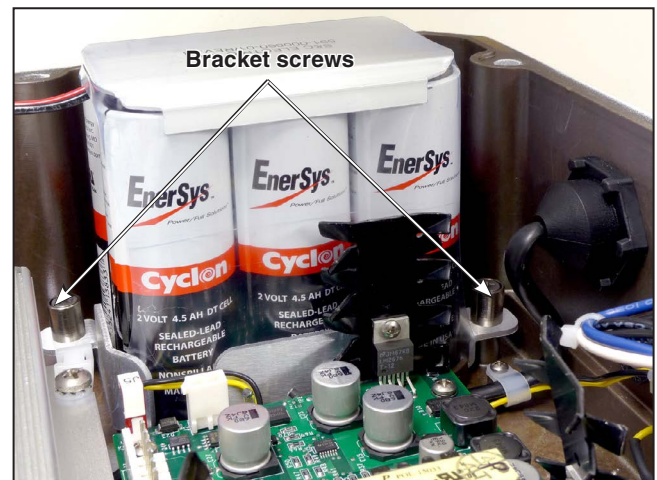


Figure 2. Two screws secure the battery bracket to the enclosure.



## STEP 2.

- (a) Connect the battery cable to the end of the battery disconnect cable and replace the cable tie removed in Step 1c on page 1. See Figure 3. Figure 4 shows the battery disconnect cable installed.
- (b) The bolt pattern of the cover is symmetrical. To avoid installing the cover upside down, install the cover with the hinge lugs facing away from the latch lug on the enclosure. See Figure 5.
- (c) Install and tighten the 10 cover bolts in a side-to-side pattern to compress the gasket evenly. Tighten to a torque of 25 +/- 5 inch-pounds. Use the bolt-tightening sequence numbers shown in Figure 5.
- (d) Repeat the sequence in Step 2 (c) and tighten to 45 +/- 5 inch-pounds.

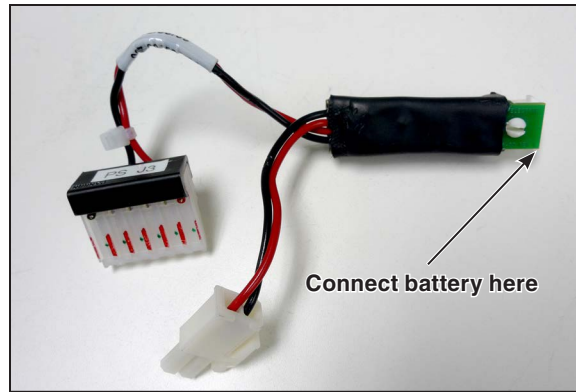


Figure 3. Battery disconnect cable.

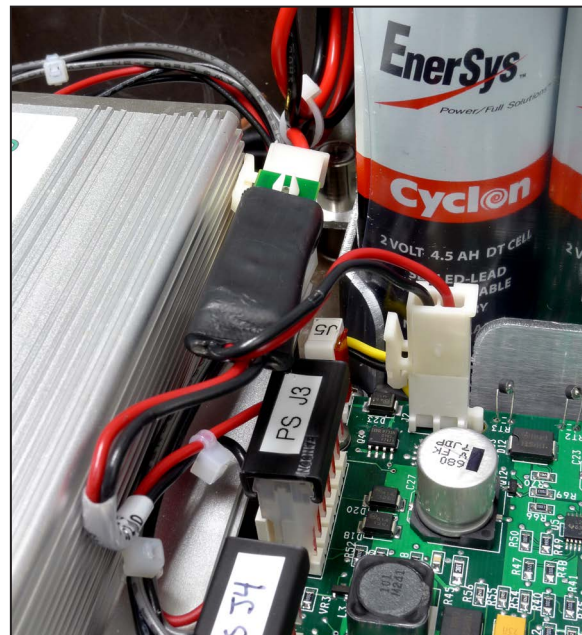


Figure 4. Installed battery disconnect cable.

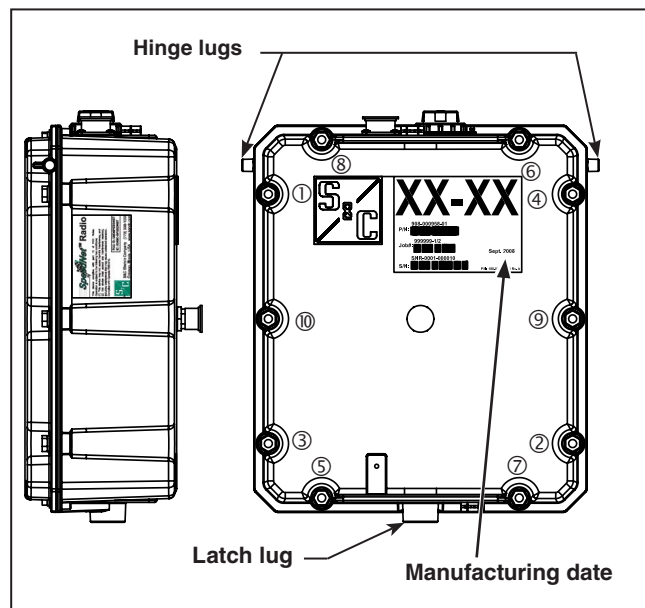


Figure 5. SpeedNet Streetlight-Mounted Repeater Radio.